

Who's on Divya's Map?

Author: Rohan Jahagirdar

Illustrator: Smitha Shivaswamy



On her first day of vacation, Divya woke up later than usual. It was going to be a happy summer.

Her cousin Ravi was going to visit her in Gajapur. He lived in the faraway city of Cuttack.

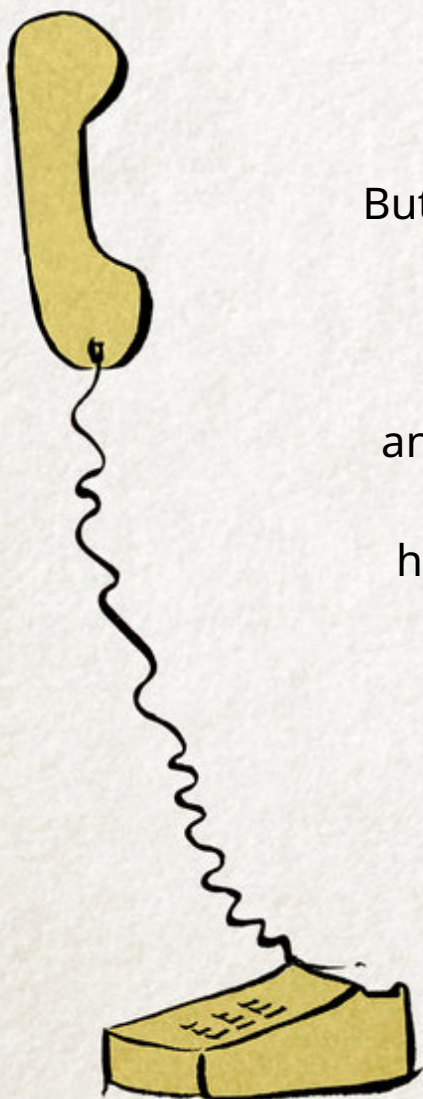
'We'll play outdoors, ride cycles, swim in the pond, pluck mangoes... we're going to have so much fun,' she thought.





But Ravi was going to travel on his own for the first time. She had given him directions over the phone.

"Walk straight from the bus stand, straight, straight, and then you'll see the pond, keep walking straight, then take a right... no, no, take a left and keep walking for about... hmm... three minutes... when you reach the post-office, take a left there..."





Divya was sure Ravi was confused. She was worried. How would he find her place?



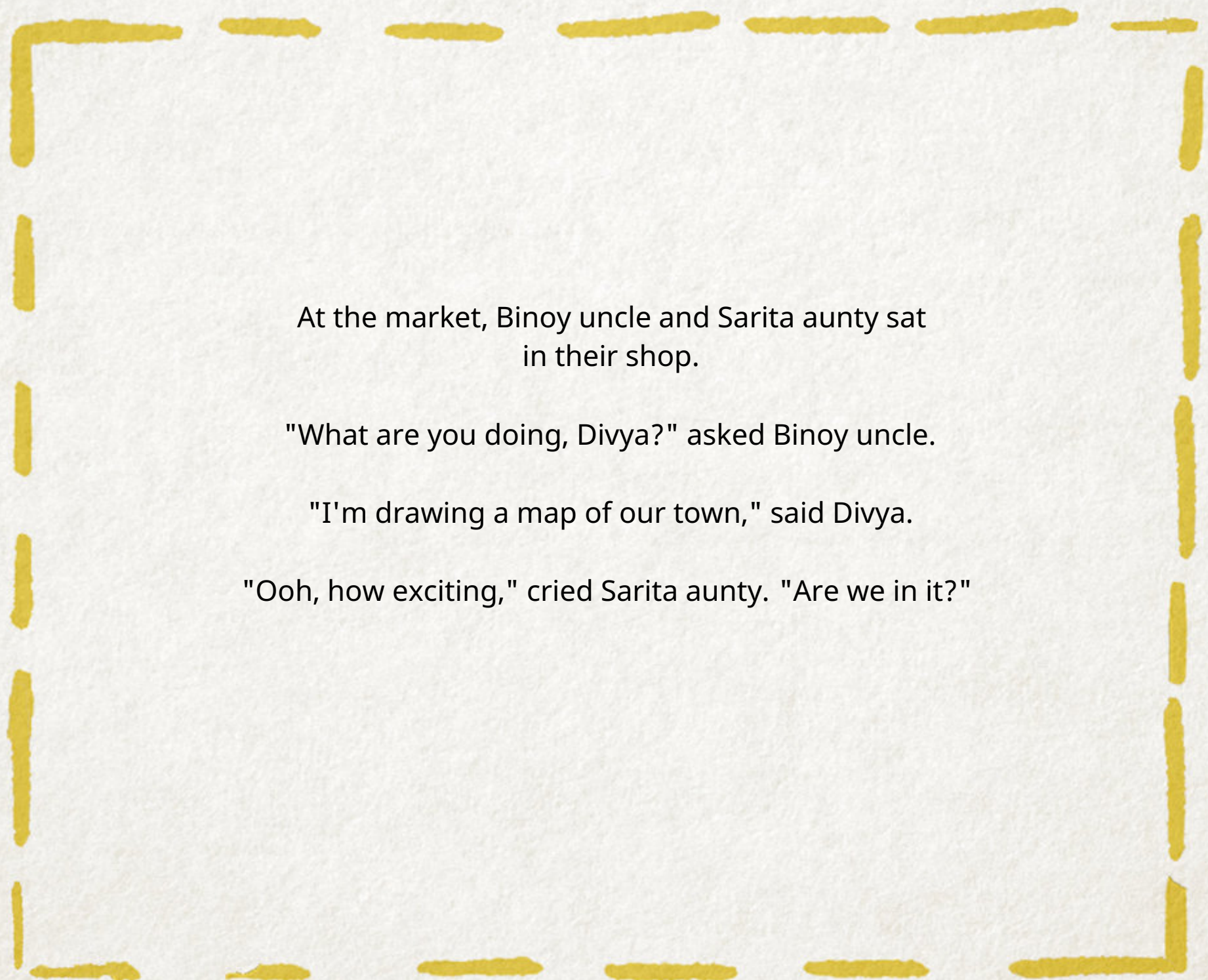
Then she had an idea.

'I'll make a map for Ravi,'
she thought. 'That will
help him find his way.'

She took out a pencil and a large sheet of paper from the cupboard. First, she drew her house, and herself next to it.

Then she went outside. One by one,
she started drawing other buildings and streets.





At the market, Binoy uncle and Sarita aunty sat
in their shop.

"What are you doing, Divya?" asked Binoy uncle.

"I'm drawing a map of our town," said Divya.

"Ooh, how exciting," cried Sarita aunty. "Are we in it?"



She and Binoy uncle came out to look at the map. "You are right here," said Divya.

She drew a bright yellow square with Binoy uncle and Sarita aunty beside it.



Then Divya crossed the road and reached the big banyan tree next to the ISPAT hospital.



Ramesh, who always sat there, called out,
"Hello Divya.What are you up to?"

"I'm making a map."

"Really? You should add me. Under the banyan tree."

Divya laughed, but he was right - Ramesh under the banyan tree
was a common sight. So she drew them too.





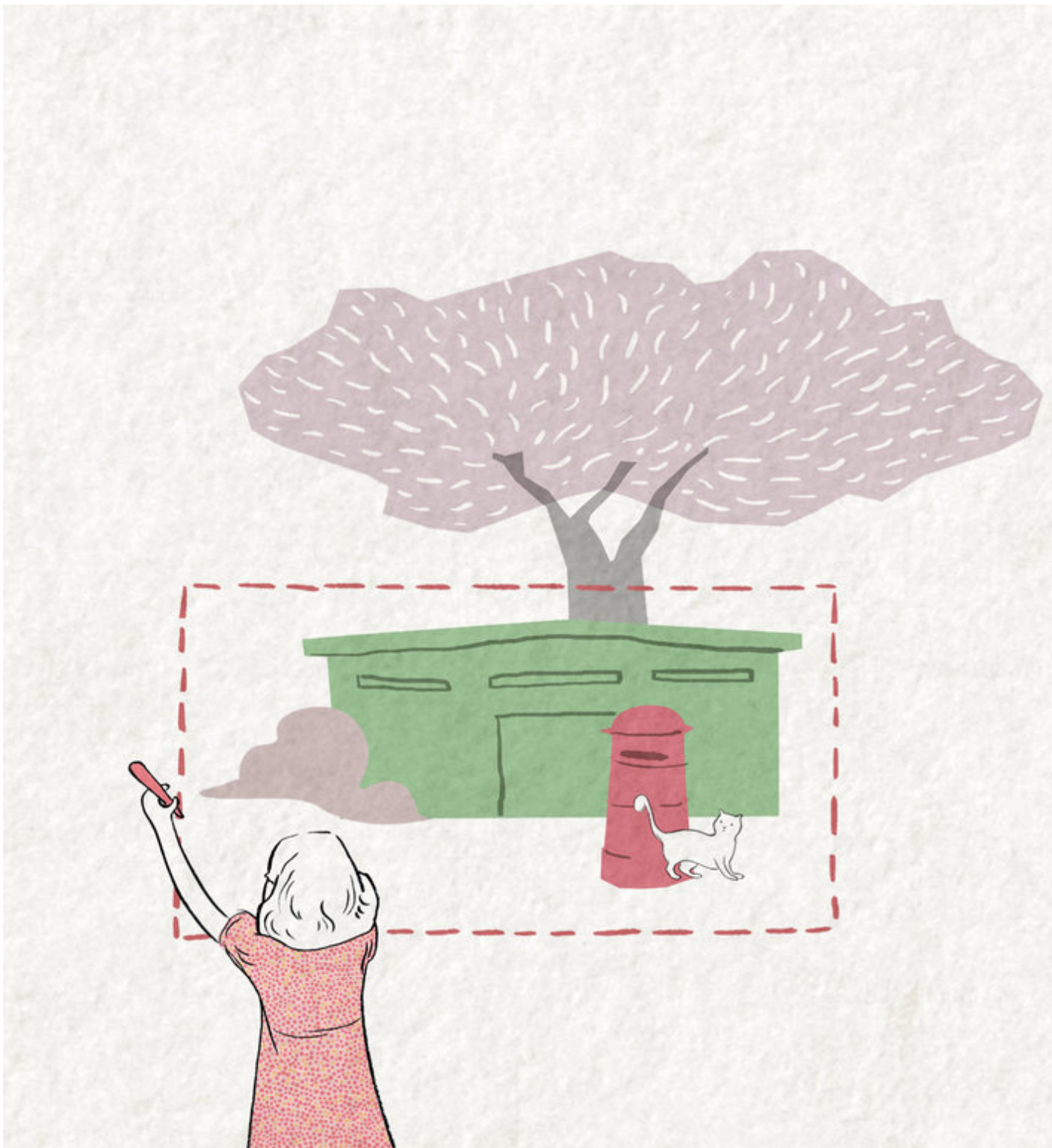


Divya continued
on her way.

By the post office, she saw
Mohan uncle, the postman,
getting off his bike.

"Hello Divya, what are you
doing?" he asked.

"She is making a map! And
we're all in it!" said Ramesh
who had followed Divya.



"Oh?" said Mohan uncle.
"Don't forget
the post office."

Divya drew a red rectangle
for the post office.

Then Divya went southwards. After five minutes,
she reached a pond where some women were washing clothes.
By now, everyone had heard that Divya was drawing a map.

"Put us in too," called Shabnam aunty.





Divya drew a large blue pond, with the women by it.
Some children had gathered at Divya's side.

"Come with me," she said, leading them home. "I'll show you something."

Divya led them to the terrace. They looked down at the town.

The sun was setting and they could see its reflection in the pond.

They looked at the map. Then they looked at the town again.



"Gajapur is so big, but we can show its landmarks in a small map like this,"
said Divya. She was rather happy with her work.

"But how will Ravi know the exact directions from your map?" asked her friend Kala.

Divya looked at the map.
"Ooh!" she exclaimed. "I'll draw a trail."

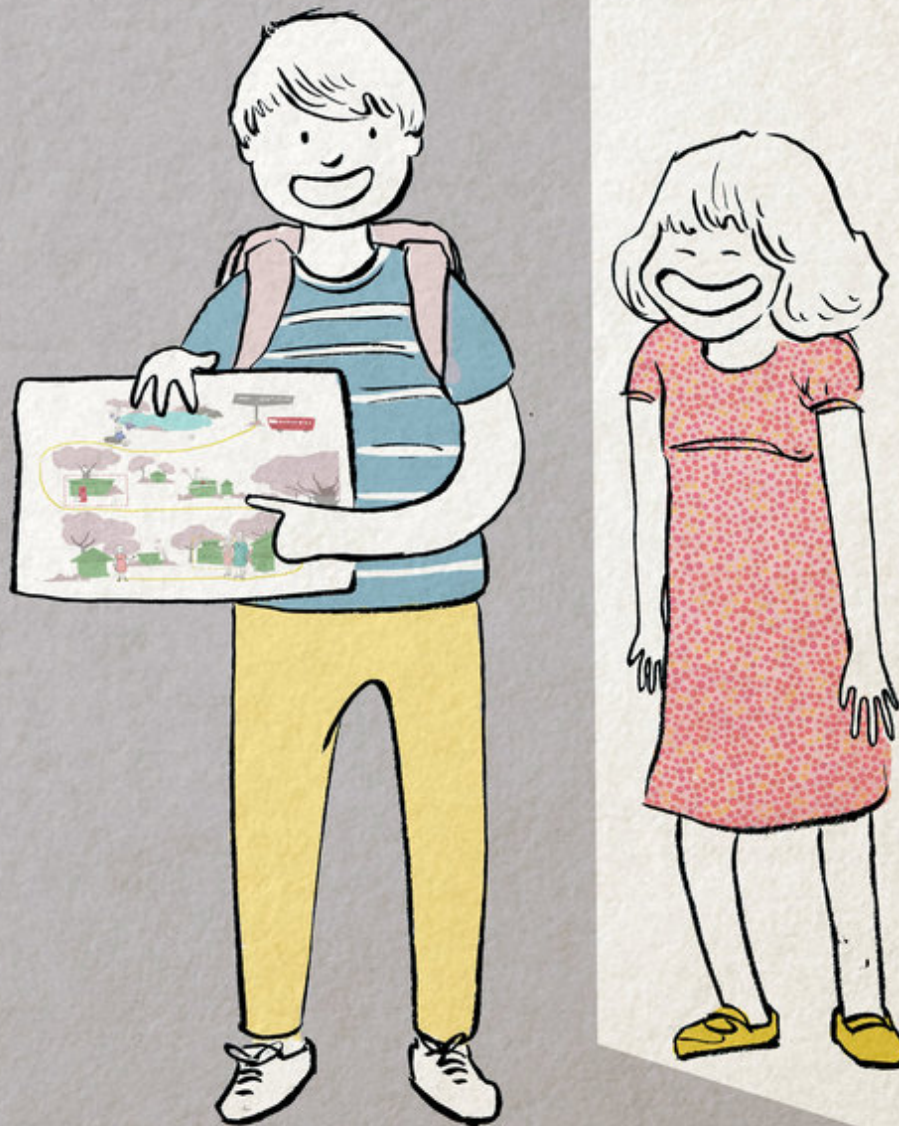




"What's a trail?" Charu wanted to know.
"A trail shows you which route to follow.
She coloured the route yellow and added red arrows.
It was a cheerful-looking map.



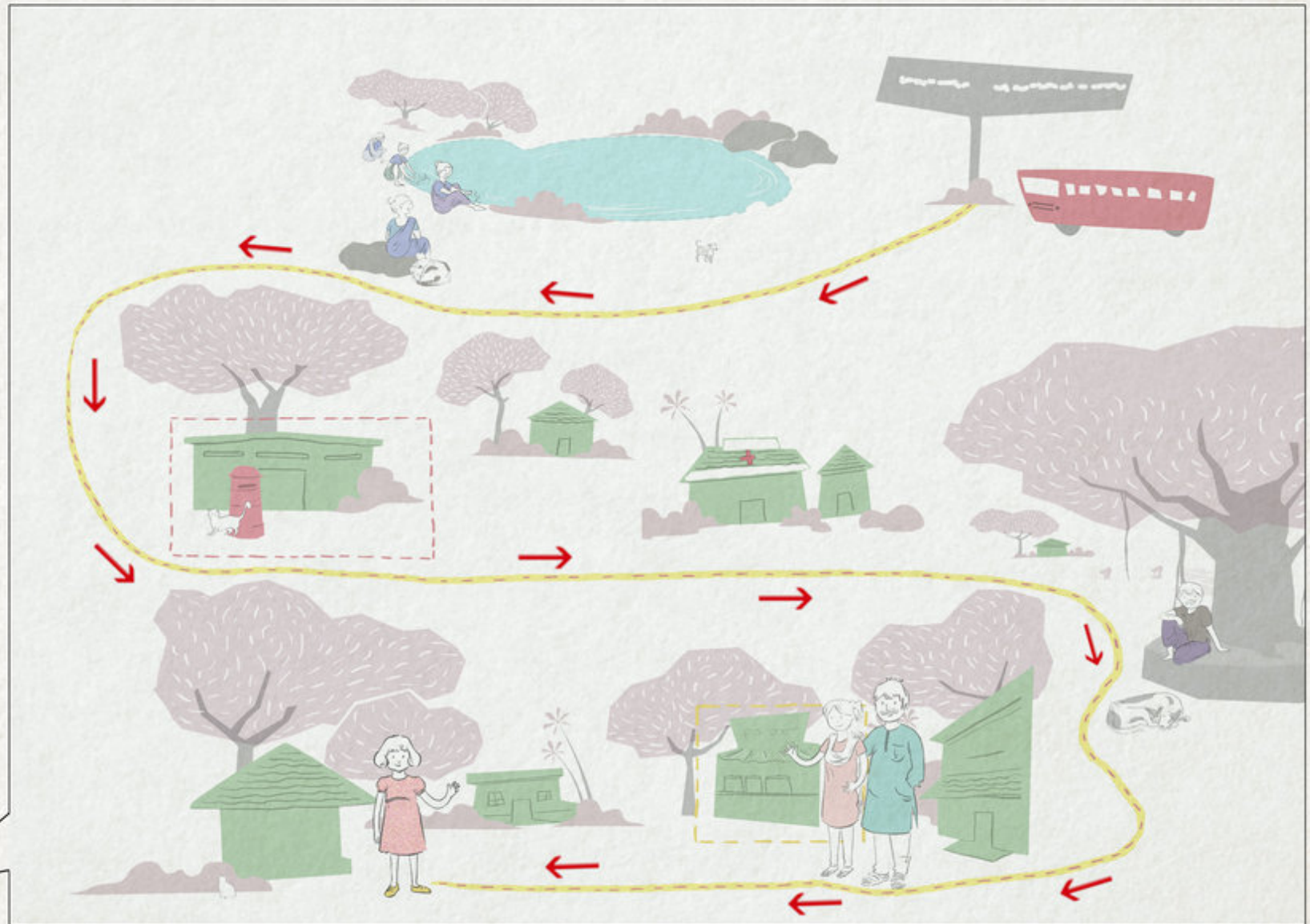
Divya folded it, put it in an envelope, stuck some stamps on it and posted it to Ravi in Cuttack.



One week later,
the doorbell rang.
When Divya opened the
door, she found Ravi
standing outside,
holding her map.

"Here I am!" he grinned.

Divya's map had worked.



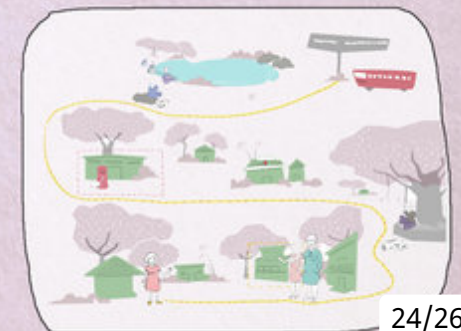


Divya can be a cartographer

A person who makes maps is called a cartographer.
Cartography is a study that combines science, geography,
art, and mathematics.

Maps help you

- See where a town or a city is located
- Understand how far places are from each other, maybe even how to reach them
- Tell what is special about a place
- Give us information about mountains, rivers, deserts, and also the population and natural resources of a place; these are usually shown using symbols and colours



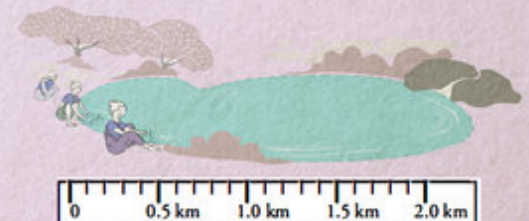
Scale

When you draw a map, how do you show that a mountain is very tall, or that a house is half the height of a coconut tree?

You use a scale. This is the relationship between the size of something on the map and its actual size. A map scale might say that one centimetre corresponds to one kilometre. That means, if you draw a pond that is 2 cm across, you are saying it is really 2 km across.

The scale can also tell you how far one place is from another.

If the distance between two points is 5 centimetres and the scale is 1 centimetre = 1 kilometre, then the actual distance between the two places is 5 km.



Story Attribution:

This story: Who's on Divya's Map? is written by [Rohan Jahagirdar](#). © Pratham Books, 2018. Some rights reserved. Released under CC BY 4.0 license.

Other Credits:

'Who's on Divya's Map?' has been published on StoryWeaver by Pratham Books. The development of this book has been supported by CISCO.
www.prathambooks.org Guest Editor: Aravinda Anantharaman

Images Attributions:

Cover page: [A girl sitting at a desk, writing](#) by [Smitha Shivaswamy](#) © Pratham Books, 2018. Some rights reserved. Released under CC BY 4.0 license. Page 2: [A girl talking on the phone](#) by [Smitha Shivaswamy](#) © Pratham Books, 2018. Some rights reserved. Released under CC BY 4.0 license. Page 3: [Two people swimming in a pond](#), by [Smitha Shivaswamy](#) © Pratham Books, 2018. Some rights reserved. Released under CC BY 4.0 license. Page 4: [Two telephones](#), by [Smitha Shivaswamy](#) © Pratham Books, 2018. Some rights reserved. Released under CC BY 4.0 license. Page 5: [A sad girl near the phone](#) by [Smitha Shivaswamy](#) © Pratham Books, 2018. Some rights reserved. Released under CC BY 4.0 license. Page 6: [A girl waving](#), by [Smitha Shivaswamy](#) © Pratham Books, 2018. Some rights reserved. Released under CC BY 4.0 license. Page 7: [A house with two trees](#) by [Smitha Shivaswamy](#) © Pratham Books, 2018. Some rights reserved. Released under CC BY 4.0 license. Page 8: [A yellow square](#), by [Smitha Shivaswamy](#) © Pratham Books, 2018. Some rights reserved. Released under CC BY 4.0 license. Page 9: [A girl drawing on the ground](#) by [Smitha Shivaswamy](#) © Pratham Books, 2018. Some rights reserved. Released under CC BY 4.0 license. Page 10: [A hospital and a house](#) by [Smitha Shivaswamy](#) © Pratham Books, 2018. Some rights reserved. Released under CC BY 4.0 license. Page 11: [Some purple trees and a green house](#) by [Smitha Shivaswamy](#) © Pratham Books, 2018. Some rights reserved. Released under CC BY 4.0 license.

Disclaimer: https://www.storyweaver.org.in/terms_and_conditions



Some rights reserved. This book is CC-BY-4.0 licensed. You can copy, modify, distribute and perform the work, even for commercial purposes, all without asking permission. For full terms of use and attribution, <http://creativecommons.org/licenses/by/4.0/>



The development of this book has been supported by CISCO. www.prathambooks.org

Images Attributions:

Page 12: [A man sitting under a tree](#) by [Smitha Shivaswamy](#) © Pratham Books, 2018. Some rights reserved. Released under CC BY 4.0 license. Page 13: [A man giving directions to a postman](#), by [Smitha Shivaswamy](#) © Pratham Books, 2018. Some rights reserved. Released under CC BY 4.0 license. Page 14: [A girl drawing a red rectangle](#), by [Smitha Shivaswamy](#) © Pratham Books, 2018. Some rights reserved. Released under CC BY 4.0 license. Page 15: [A woman sitting with a dog](#), by [Smitha Shivaswamy](#) © Pratham Books, 2018. Some rights reserved. Released under CC BY 4.0 license. Page 16: [Some people gathered around a pond](#), by [Smitha Shivaswamy](#) © Pratham Books, 2018. Some rights reserved. Released under CC BY 4.0 license. Page 17: [Some children talking](#), by [Smitha Shivaswamy](#) © Pratham Books, 2018. Some rights reserved. Released under CC BY 4.0 license. Page 18: [Girl with a map](#), by [Smitha Shivaswamy](#) © Pratham Books, 2018. Some rights reserved. Released under CC BY 4.0 license. Page 19: [Children looking at a map](#) by [Smitha Shivaswamy](#) © Pratham Books, 2018. Some rights reserved. Released under CC BY 4.0 license. Page 20: [A girl sitting at a desk](#) by [Smitha Shivaswamy](#) © Pratham Books, 2018. Some rights reserved. Released under CC BY 4.0 license. Page 21: [A boy with a picture and girl smiling](#) by [Smitha Shivaswamy](#) © Pratham Books, 2018. Some rights reserved. Released under CC BY 4.0 license. Page 22: [A boy showing a map](#) by [Smitha Shivaswamy](#) © Pratham Books, 2018. Some rights reserved. Released under CC BY 4.0 license. Page 23: [A girl drawing](#), by [Smitha Shivaswamy](#) © Pratham Books, 2018. Some rights reserved. Released under CC BY 4.0 license.

Disclaimer: https://www.storyweaver.org.in/terms_and_conditions



Some rights reserved. This book is CC-BY-4.0 licensed. You can copy, modify, distribute and perform the work, even for commercial purposes, all without asking permission. For full terms of use and attribution, <http://creativecommons.org/licenses/by/4.0/>



This book was made possible by Pratham Books' StoryWeaver platform. Content under Creative Commons licenses can be downloaded, translated and can even be used to create new stories - provided you give appropriate credit, and indicate if changes were made. To know more about this, and the full terms of use and attribution, please visit the following [link](#).

Images Attributions:

Page 24: [A small map](#), by [Smitha Shivaswamy](#) © Pratham Books, 2018. Some rights reserved. Released under CC BY 4.0 license. Page 26: [A pond](#), by [Smitha Shivaswamy](#) © Pratham Books, 2018. Some rights reserved. Released under CC BY 4.0 license.

Disclaimer: https://www.storyweaver.org.in/terms_and_conditions



Some rights reserved. This book is CC-BY-4.0 licensed. You can copy, modify, distribute and perform the work, even for commercial purposes, all without asking permission. For full terms of use and attribution, <http://creativecommons.org/licenses/by/4.0/>



The development of this book has been supported by CISCO. www.prathambooks.org

Who's on Divya's Map? (English)

Divya is excited that her cousin Ravi is going to come to Gajapur soon. But she is not sure how he will find her house. Would a map help?

This is a Level 3 book for children who are ready to read on their own.



Pratham Books goes digital to weave a whole new chapter in the realm of multilingual children's stories. Knitting together children, authors, illustrators and publishers. Folding in teachers, and translators. To create a rich fabric of openly licensed multilingual stories for the children of India and the world. Our unique online platform, StoryWeaver, is a playground where children, parents, teachers and librarians can get creative. Come, start weaving today, and help us get a book in every child's hand!